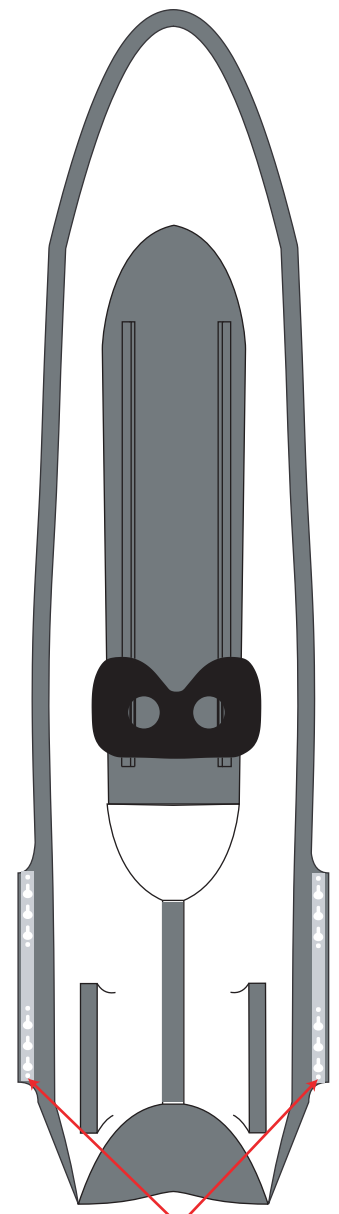
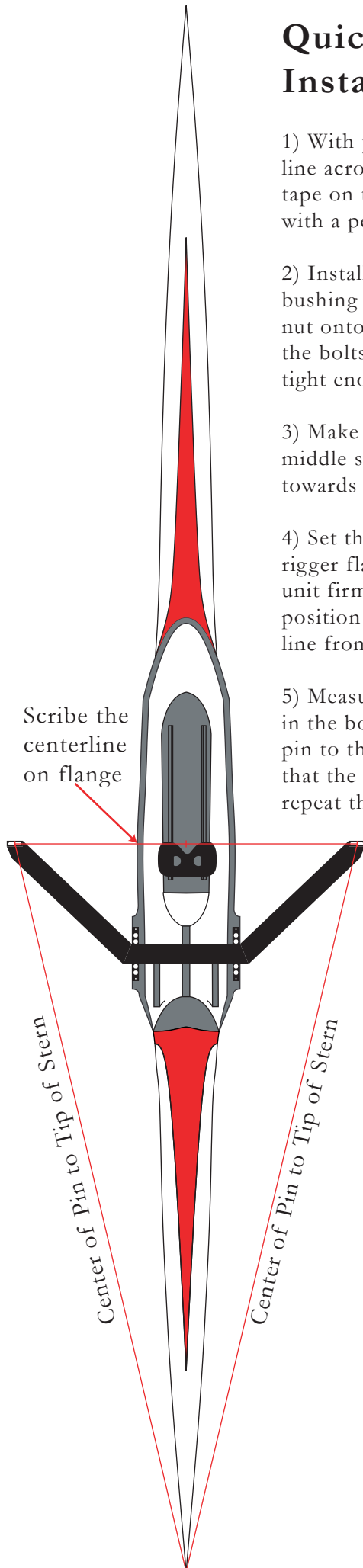


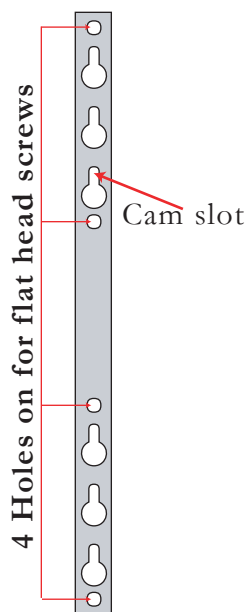
Quick Release Wing Rigger Installation Guide

- 1) With your existing rigger mounted to your boat, measure a line across the boat from pin to pin. Place a piece of masking tape on the flange under this line - scribe the line on the tape with a pen.
- 2) Install 4 cam bolts to existing wing rigger. Insert cam bushing from top and thread the cam handle with the cylinder nut onto the cam bolt. Once all 4 are on, slide cam plates onto the bolts and adjust the tension by twisting cam handle. Once tight enough, use the 1.5mm set screw to lock the cam in place.
- 3) Make sure the cam plates are attached to the rigger using the middle set of holes and that the narrow slot of the hole is towards the bow and that the cam bolt is fully set into the slot.
- 4) Set the wing rigger, with cam plate unit attached, onto the rigger flange. You will need a set of spring clamps to keep the unit firmly attached to the boat's flange while you adjust the position of the wing so that the pins line up with your scribed line from the previous riggers.
- 5) Measure across the boat from pin to pin to center the rigger in the boat. Once centered, measure from the center of the pin to the tip of the stern. Do this from each pin to ensure that the pin is center and square to the boat. You may need to repeat this step a couple times to get it correct.
- 6) Once secure and centered - drill the fore and aft holes on the cam plate with a 5mm bit. Insert screws and tighten nuts. Remove the rigger and drill the center 2 holes and secure.



Attached Cam Plates

Towards the bow



Cam Plate



Attach cam plates to the wing rigger using the center set of holes. Make sure to attach the cam plates with the small slot toward the bow and the cam-bolt fully set into the slot